



छत्तीसगढ़ गृह निर्माण मंडल

2019

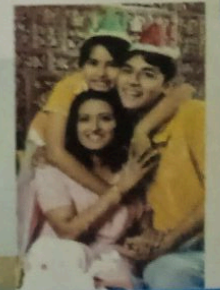
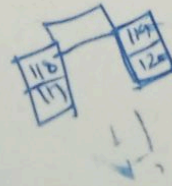
छत्तीसगढ़ गृह निर्माण मंडल CHHATTISGARH HOUSING BOARD



डुमरतराई रायपुर में मध्यम आय वर्ग हेतु फ्लैट्स क्रय करने का सुनहरा अवसर



Himalayan Heights
हिमालयन हाइट्स





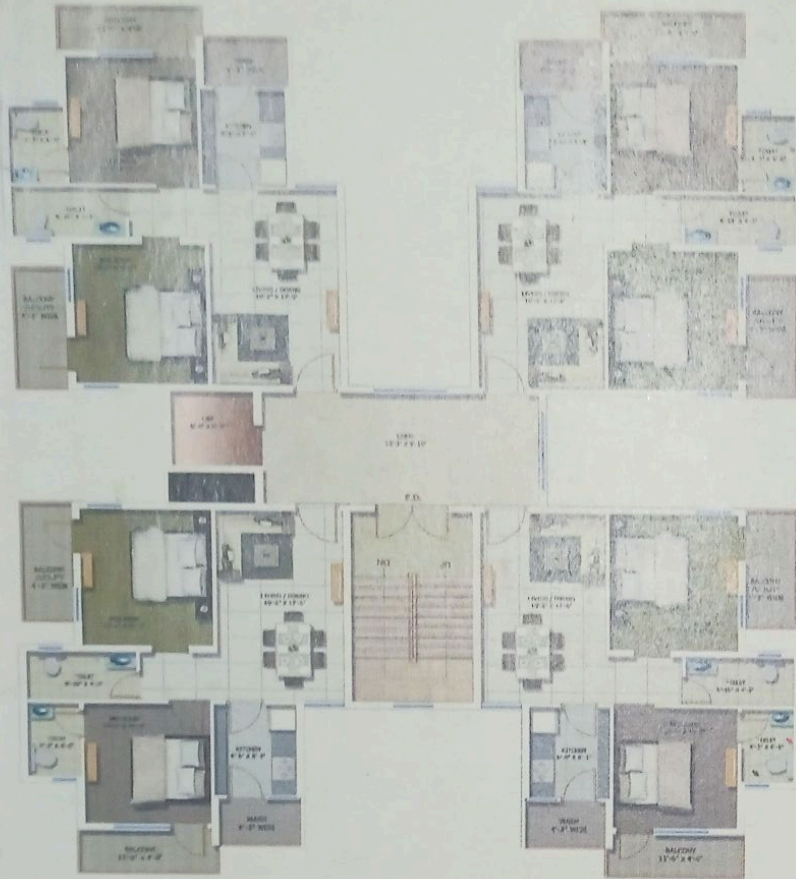
Himalayan Heights
हिमालयन हाईट्स



Specification

FOR 2 BHK MIG FLATS at Dumartarai, Raipur

1. Foundation : R.C.C. Framed structure in cement concrete M-20 with earthquake resistance design.
2. Super structure : 20 cms thick brick masonry in C.M. 1:6 for outer walls and 10 cms thick brick masonry in C.M. 1:4 for partition walls.
3. Doors frame/shutters : Sal wood /Concrete door frame with flush shutter and P.V.C. shutters for toilets
4. Window : Three track alluminium sliding window.
5. Floors : Matt Finish Ceramic floor tiles in all rooms and group V Ceramic tiles for corridors.
6. Plastering : 13mm/20mm thick cement Plaster C.M. 1:5 for inside / outside, 6mm thick ceiling Plaster in C.M. 1:4.
7. Finish : Weather Shield Painting for outer finish and distemping for internal finish with wall care cement putty.
8. Water Supply : ISI marked 15mm/25mm G.I. pipe, Chromium plated brass fitting with P.V.C. pipe for sanitation.
9. Internal Electrification : ISI mark concealed copper wiring with P.V.C. pipe.
10. Additional Facilities :
 1. Parking at Ground floor.
 2. Provision of lift.
 3. Concrete paving for open.
 4. Alternate power supply for common service through Generator System.
 5. Modern Fire Fighting System.
 6. Land Scapped Open Area.
 7. R.C.C. Road & Drain.



MIG FLAT (2 BHK)
TYPICAL FLOOR PLAN

Type : MIG FLAT (G+6)
 Construction Area of One unit : 72.00 sq. M. / 775 sq.ft.
 Superbuilt up Area of one unit : 83.00 sq. m. / 893 sq. ft.



Floor Plan for One Flat



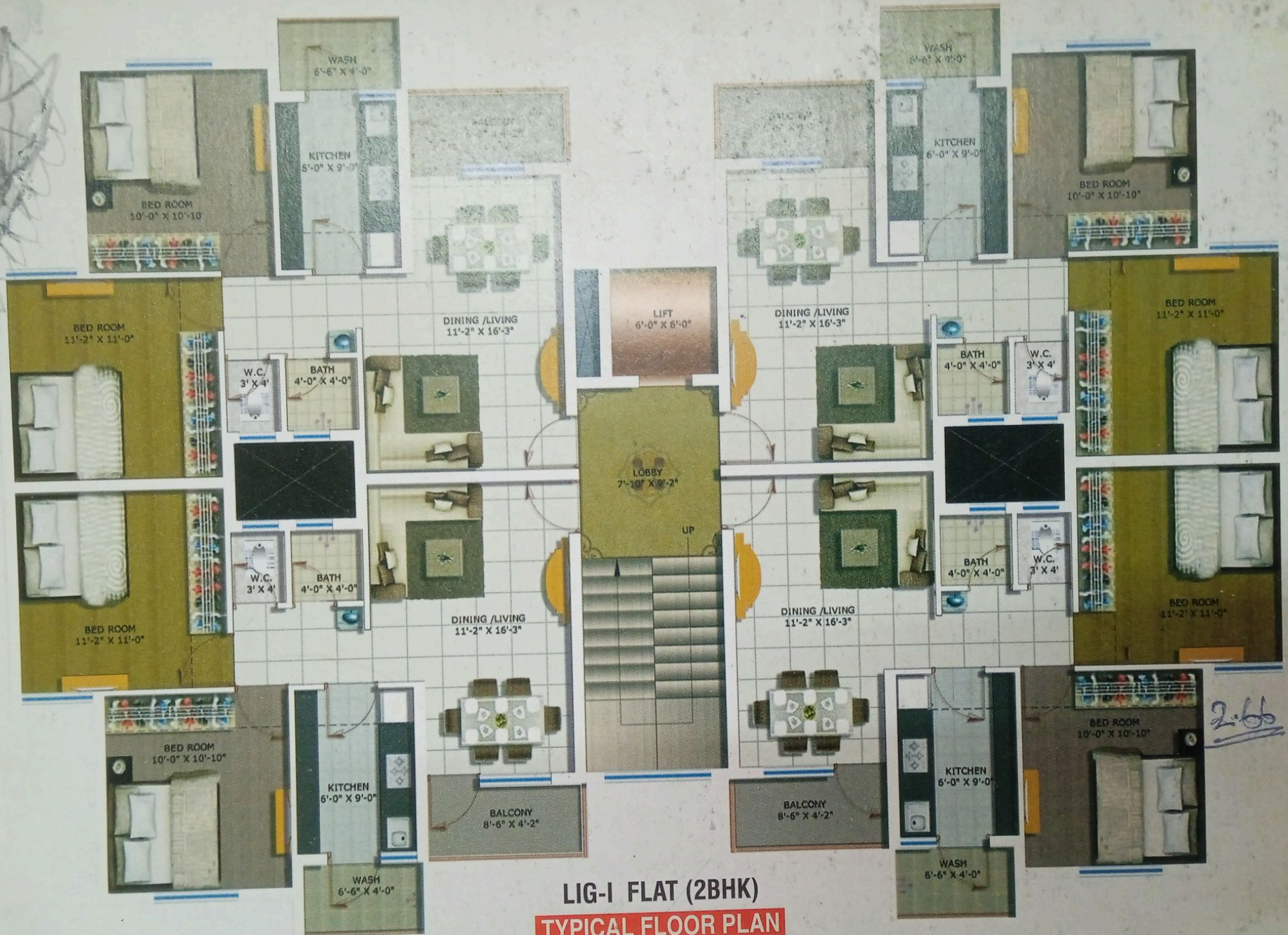
Himalayan Heights
हिमालयन हाईट्स



Specification

FOR 2 BHK MIG-I FLATS at Dumart

1. Foundation : R.C.C. Framed struc. cement concrete M-2 earthquake resistance Des.
2. Superstructure : 20 cms thick brick mas. C.M. 1:6 for outer walls ar- cms thick brick masonry in C.M. 1:4 for partition walls.
3. Doors frame/Shutters : Sal wood /Concrete door fram. with flush shutter and P.V.C. shutters for toilets.
4. Window : Three track alluminium sliding window.
5. Floors : Matt Finish Ceramic floor tiles in all rooms and group V Ceramic tiles for corridors.
6. Plastering : 13mm/20mm thick cement Plaster C.M. 1:5 for inside / outside, 6mm thick ceiling Plaster in C.M. 1:4.
7. Finish : Weather Shield Painting for outer finish and distemping for internal finish with wall care cement putty.
8. Water Supply : ISI marked 15mm/25mm G.I. pipe, Chromium plated brass fitting with P.V.C. pipe for sanitation.
9. Internal Electrification : ISI mark concealed copper wiring with P.V.C. pipe.
10. Additional Facilities :
 1. Parking at Ground floor.
 2. Provision of lift.
 3. Concrete paving for open.
 4. Alternate power supply for common service through Generator System.
 5. Modern Fire Fighting System
 6. Land Scapped Open Area.
 7. R.C.C. Road & Drain.



LIG-I FLAT (2BHK)
TYPICAL FLOOR PLAN

Type : MIG-I FLAT (G+6)
 Construction Area of One unit : 61.80 sq. M. / 665 sq.ft.
 Superbuilt up Area of one unit : 67.15 sq. M. / 723 sq. ft.

2.66

C.N.
 rain
 P.V.C
 iding
 es in
 amic
 ment
 ide /
 laster
 outer
 g for
 care
 n G.I.
 brass
 e for
 wiring
 r.
 pen.
 apply for
 through
 System
 Area.

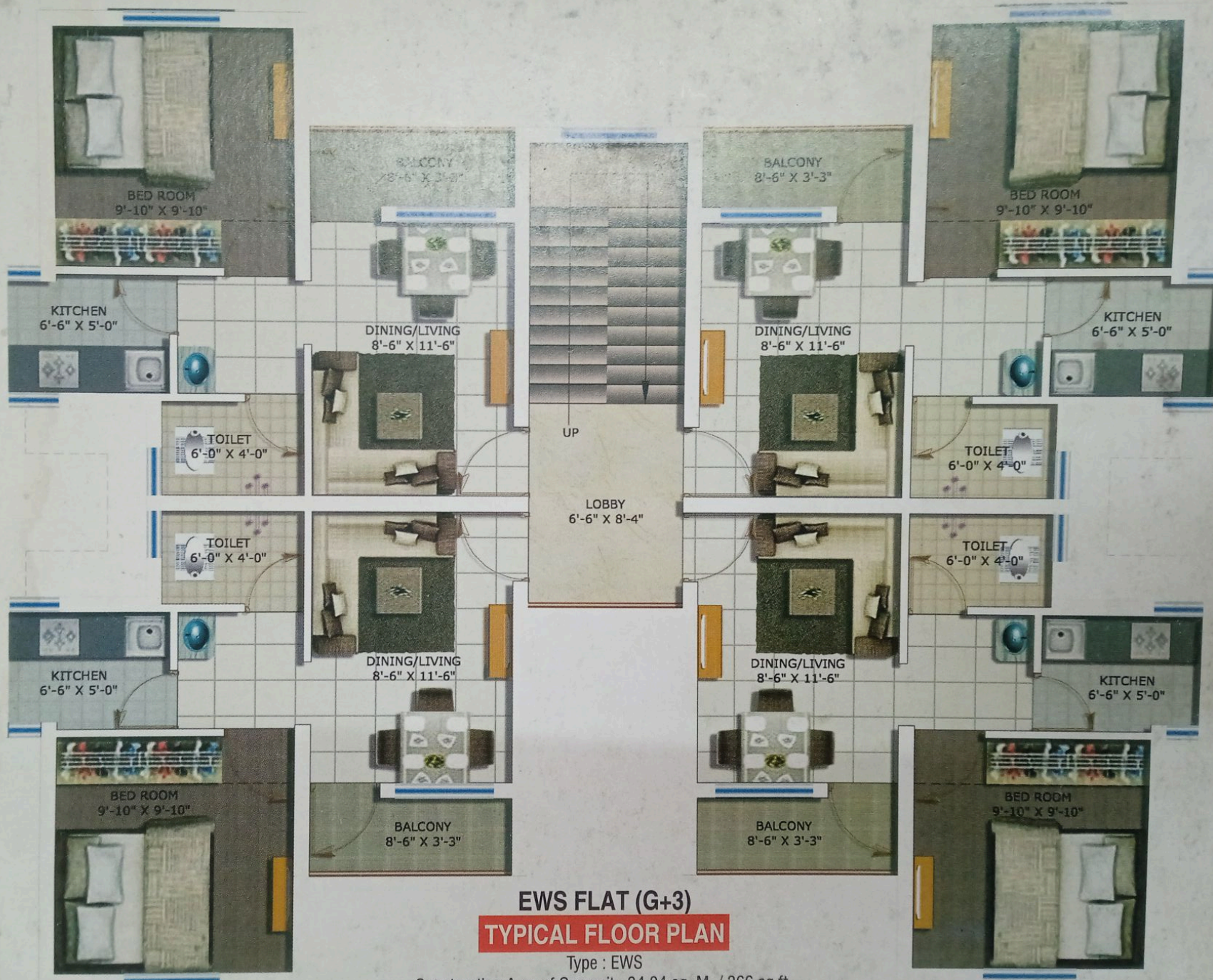


Specification

FOR EWS FLATS at Dumartarai, Raipur

1. Foundation : R.C.C. Framed structure in cement concrete M-20 with earthquake resistance.
2. Super structure : 20 cms thick brick masonry in C.M. 1:6 for outer walls and 10 cms thick brick masonry in C.M. 1:4 for partition walls.
3. Doors frame/Shutters : Angle Iron door frame with flush shutter and P.V.C. shutters for toilets.
4. Window : Z Section window with 4mm, Thick Glass
5. Floors : Ceramic floor tiles in all rooms and Black Stone for Staircase & Corridor.
6. Plastering : 13mm/20mm thick cement plaster C.M. 1:5 for inside / outside, 6mm thick ceiling plaster in C.M. 1:4.
7. Finish : Snowcem Painting for outer finish and Distemper for internal finish.
8. Water Supply : ISI marked 15mm / 25mm G.I. pipe, Chromium plated brass fitting with P.V.C. pipe for sanitation.
9. Internal Electrification : ISI mark concealed copper wiring with P.V.C. pipe.

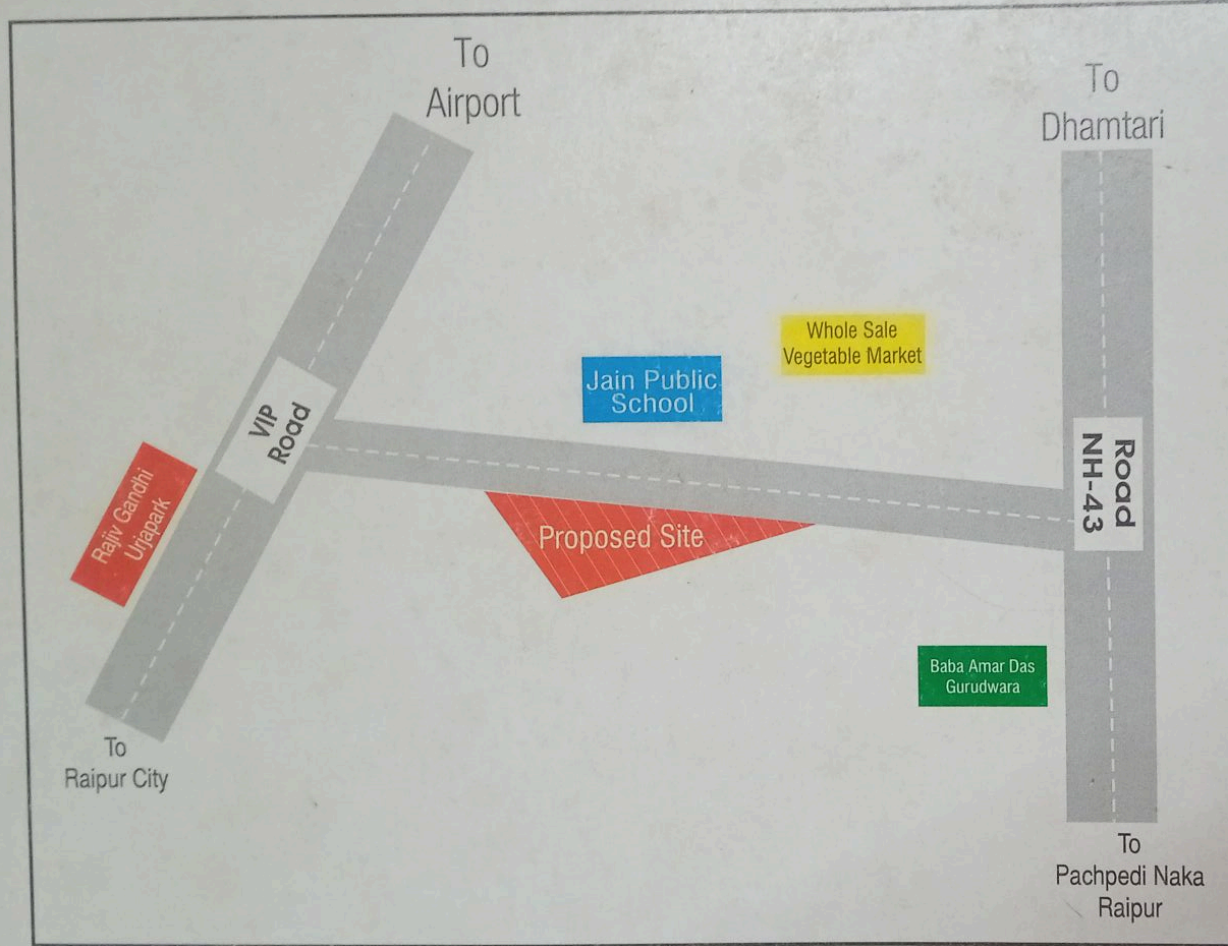
i, Raipur
 a m e d
 cement
 D with
 stance
 brick
 M. 1:6
 and 10
 brick
 1:4 for
 frame
 er and
 s for
 w with
 s
 is in all
 Stone
 se &
 thick
 C.M.
 outside,
 ceiling
 4.
 ing for
 and
 internal
 5mm /
 pipe,
 d brass
 C. pipe
 concealed
 g with



EWS FLAT (G+3)
TYPICAL FLOOR PLAN

Type : EWS
 Construction Area of One unit : 34.04 sq. M. / 366 sq.ft.
 Superbuilt up Area of one unit : 37.12 sq. m. / 399 sq. ft.

Location Plot



आवेदन पत्र प्राप्त एवं
जमा करने का स्थान

सूचना केन्द्र

छत्तीसगढ़ गृह निर्माण मण्डल
मुख्यालय, शंकर नगर,
रायपुर (छत्तीसगढ़)

अधिक जानकारी के लिए संपर्क करें :

कार्यपालन अभियंता, छत्तीसगढ़ गृह निर्माण मण्डल, संभाग-4, रायपुर (छत्तीसगढ़)

मो.: 94242-09025, 94242-84256, 94242-09017