



MIG (Flats) G+3/G+4





MIG (Flats) G+3

Super Built up Area :
Super Built up area 73.65 sq.mt.
(792.47 sq.ft.)

MIG (Flats) G+4

Super Built up Area :
Super Built up area 73.65 sq.mt.
(792.47 sq.ft.)



Specifications

Foundation & Super Structure : R.C.C. Column footing of M20 grade cement concrete, with ground beam, plinth beam. 20 Cm. thick brick masonry in C.M 1:6 for main walls & 10 Cm. thick brick masonry in C.M 1:4 for partition walls. With M 20 concrete 11cm thick slab.

Flooring : Vitrified tiles for Hall, Ceramic floor tiles for room & marble stone Kitchen platform with Steel sink.

Joinery : Sal wood Chaukhat with teak pannelled shutter for entrance & Commercial flush Door one side teak face shutter in Rooms, PVC shutter in toilet and three track aluminium section window.

Plastering : 13mm/20mm thick cement plaster in Prop. 1:5 & 6mm thick plaster in cement mortar 1:4 on ceiling.

Finishing : Synthetic Enamel paint of approved 1st quality 3 coats i/c priming coat for doors & window. 2 coat super snowcem for outer side, J.K. water proofing putty inside, 2 coats distempering with oil bound distemper inside.

Water Supply & Sanitary Fittings : G.I. pipe line class "B" & C.P. fittings for water supply and ISI marked P.V.C., 500 Ltr. HDPE water tank for each Flat.

Internal Electrification : P.V.C. pipe concealed wiring with copper wire and ISI mark fittings.

Note: All material will be of approved quality from the Board.

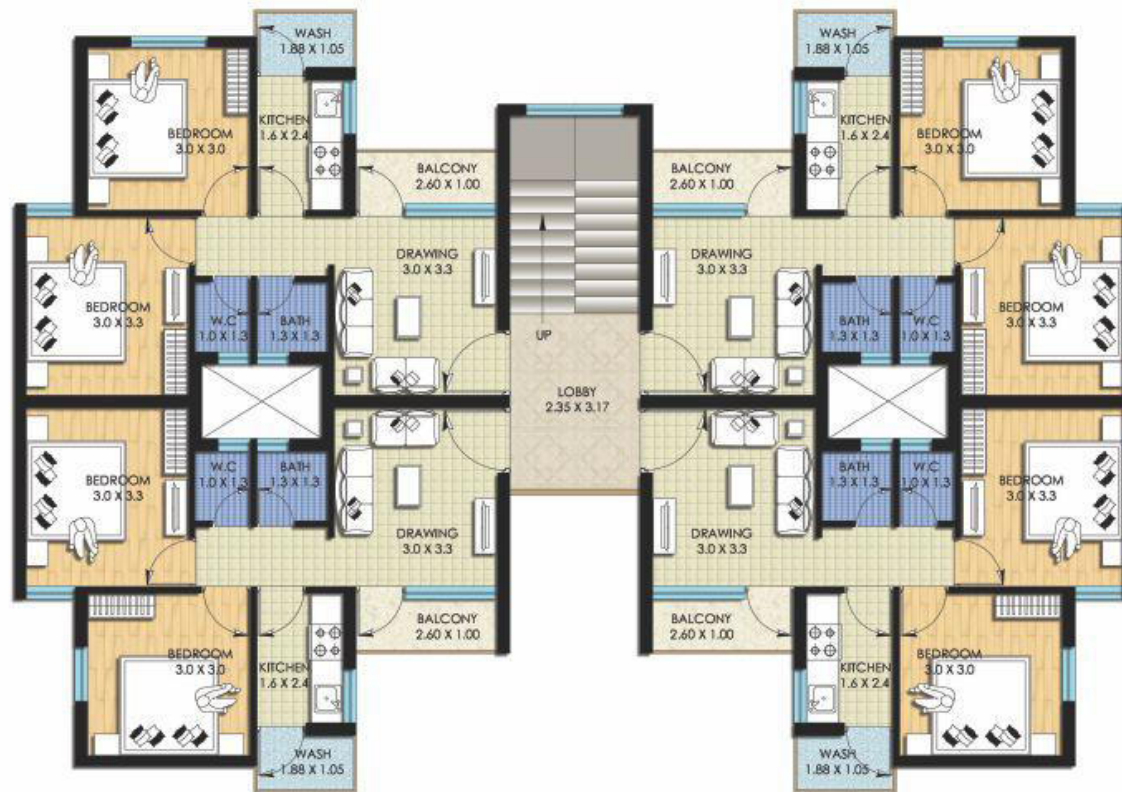


छत्तीसगढ़ गृह निर्माण मण्डल
CHHATTISGARH HOUSING BOARD
www.cgghb.gov.in



LIG (Flats) G+3





LIG (Flats) G+3

Built up Area :
Built up area 57.10 sq.mt.
(614.40 sq.ft.)

Specifications

Foundation & Super Structure : R.C.C. Column footing of M20 grade cement concrete, with ground beam, plinth beam. 20 Cm. thick brick masonry fly Ash in C.M 1:6 for main walls & 10 Cm. thick masonry brick in C.M 1:4 for partition walls. With M 20 concrete 11cm thick slab.

Flooring : 600x600 Single charged Vitrified tiles for Hall, Ceramic floor tiles for room & marble stone Kitchen platform with Steel sink.

Joinery : Sal wood Chaukhat with teak pannelled shutter for entrance & Commercial flush Door one side teak face shutter in Rooms, PVC shutter in toilet and three track aluminium section window with M.S. Grill.

Plastering : 13mm/20mm thick cement plaster in Prop. 1:5 & 6mm thick plaster in cement mortar 1:4 on ceiling.

Finishing : Synthetic Enamel paint of approved 1st quality 3 coats i/c priming coat for doors & window. 2 coat super snowcem for outer side, J.K. Brila water proofing putty inside, 2 coats distemping with oil bound distemper inside.

Water Supply & Sanitary Fittings : G.I. pipe line UPVC class "B" & C.P. fittings for water supply and ISI marked P.V.C., 500 Ltr. HDPE water tank for each Flat.

Internal Electrification : P.V.C. pipe concealed wiring with copper wire and ISI mark fittings with switch.

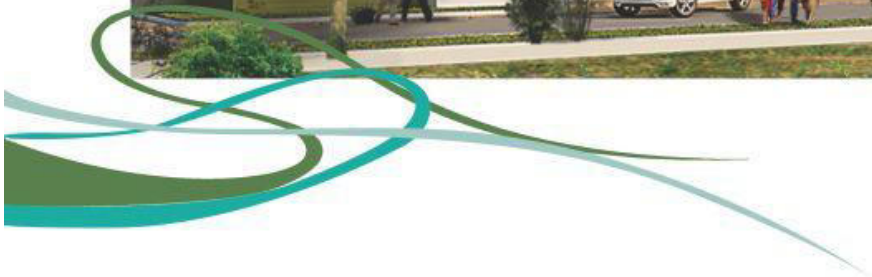
Note: All material will be of approved quality from the Board.



छत्तीसगढ़ गृह निर्माण मण्डल
CHHATTISGARH HOUSING BOARD
www.cgghb.gov.in



EWS (Flats) G+3





EWS (Flats) G+3

Built up Area :
Built up area 37.06 sq.mt.
(398.77 sq.ft.)

Specifications

Foundation & Super Structure : R.C.C. Column footing of M20 grade cement concrete, with ground beam, plinth beam. 20 Cm. thick brick masonry in C.M 1:6 for main walls & 10 Cm. thick brick masonry in C.M 1:4 for partition walls. With M 20 concrete 11cm thick slab.

Flooring : Caremic Floor for Hall & Room, Flag stone Kitchen platform with Steel sink.

Joinery : RCC/Angel Iron Chaukhat with Commercial Pannel for entrance & Commercial flush Door shutter in Rooms, PVC shutter in toilet and three track Z section window.

Plastering : 13mm/20mm thick cement plaster in Prop. 1:5 & 6mm thick plaster in cement mortar 1:4 on ceiling.

Finishing : Synthetic Enamel paint of approved quality 3 coats i/c priming coat for doors & window. 2 coat super snowcem for outer side, J.K. water proofing putty inside, 2 coats distempering with oil bound distemper inside.

Water Supply & Sanitary Fittings : G.I. pipe line class "B" & C.P. fittings for water supply and ISI marked P.V.C., 500 Ltr. HDPE water tank for each Flat.

Internal Electrification : P.V.C. pipe concealed wiring with copper wire and ISI mark fittings.

Note: All material will be of approved quality from the Board.



छत्तीसगढ़ गृह निर्माण मण्डल
CHHATTISGARH HOUSING BOARD
www.cgghb.gov.in