

## COMMERCIAL COMPLEX

(VARIOUS OPTION LIKE BOT/PPP ETC. WILL BE ADOPTED)



### Specification

#### Foundation & Structure

RCC Framed Structure Cement Concrete M-20 (1 : 1.5 : 3) and 2nd Class T.M. Chimney / Fly ash Brick Masonry in C.M. 1 : 6

#### Joinery

Ms Rolling Shutter in shops. In Office Halls Salwood/RCC door frame & flush doors with teak veneer & Masonite doors . Powder coated alluminum sliding window. PVC Coated Masonite doors in toilets.

#### Flooring

Vitrified Tiles in Shops & office hall. Industrial Tiles on Corridor. Ceramic concept tiles in Toilets.

#### Finishing

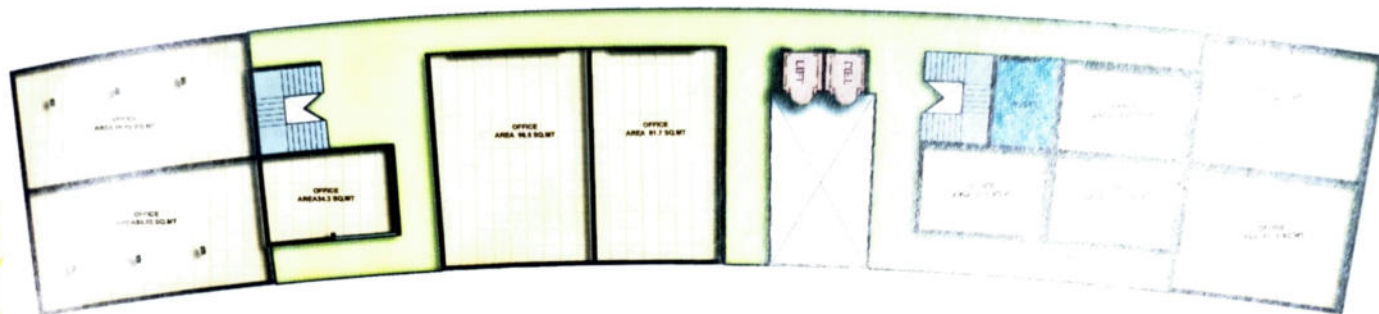
Inside JK white / Birla cement putty with plastic emulsion and outside weather shield / Apex paint

#### Water Supply & Sanitary

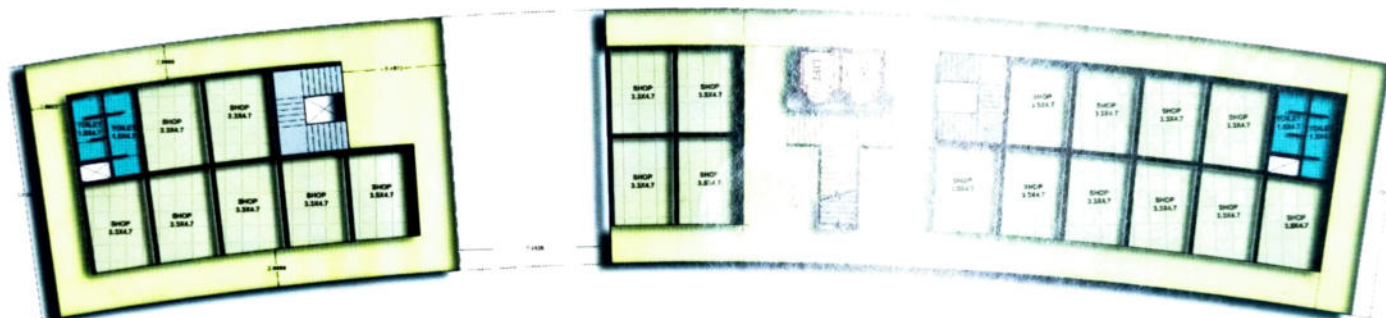
Best quality C.P. Fittings, WC & washbasin in Bathroom. I.S.I. GI/UPVC Pipe & fittings .

#### Internal Electrification

PVC Pipe Concealed copper wiring with modular ISI mark Accessories



Second Third & Fourth Floor Plan



Ground & First Floor Plan Floor Plan

S.No.	Type of Construction	Nos. of Unit	Builtup Area of Each Unit Sqft
<b>A. Ground Floor</b>			
Shops		4	183.35
Shops		7	179.15
Shops		4	187.43
Shops		6	182.27
<b>B. First Floor</b>			
Shops		4	183.35
Shops		7	179.15
Shops		4	187.43
Shops		6	182.27

S.No.	Type of Construction	Nos. of Unit	Builtup Area of Each Unit Sqft
<b>C. Second Floor</b>			
Office Hall		1	909.54
Office Hall		1	369.06
Office Hall		1	1038.44
Office Hall		1	879.41
Office Hall		1	361.53
Office Hall		1	169.57
Office Hall		1	658.29
Office Hall		1	674.86
Office Hall		1	364.54
Office Hall		1	934.29

S.No.	Type of Construction	Nos. of Unit	Builtup Area of Each Unit Sqft
<b>D. Third Floor</b>			
Office Hall		1	909.54
Office Hall		1	369.06
Office Hall		1	1038.44
Office Hall		1	879.41
Office Hall		1	361.53
Office Hall		1	169.57
Office Hall		1	658.29
Office Hall		1	674.86
Office Hall		1	364.54
Office Hall		1	934.29

S.No.	Type of Construction	Nos. of Unit	Builtup Area of Each Unit Sqft
<b>E. Fourth Floor</b>			
Office Hall		1	909.54
Office Hall		1	369.06
Office Hall		1	1038.44
Office Hall		1	879.41
Office Hall		1	361.53
Office Hall		1	169.57
Office Hall		1	658.29
Office Hall		1	674.86
Office Hall		1	364.54
Office Hall		1	934.29