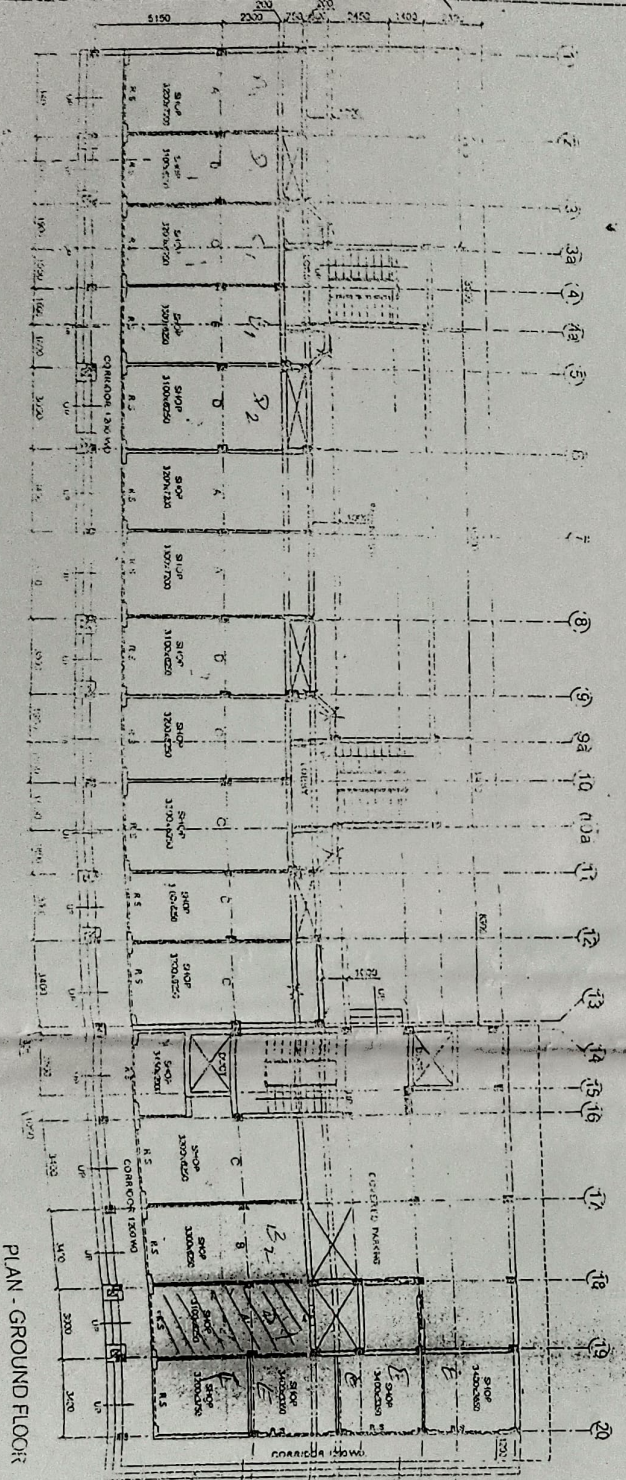
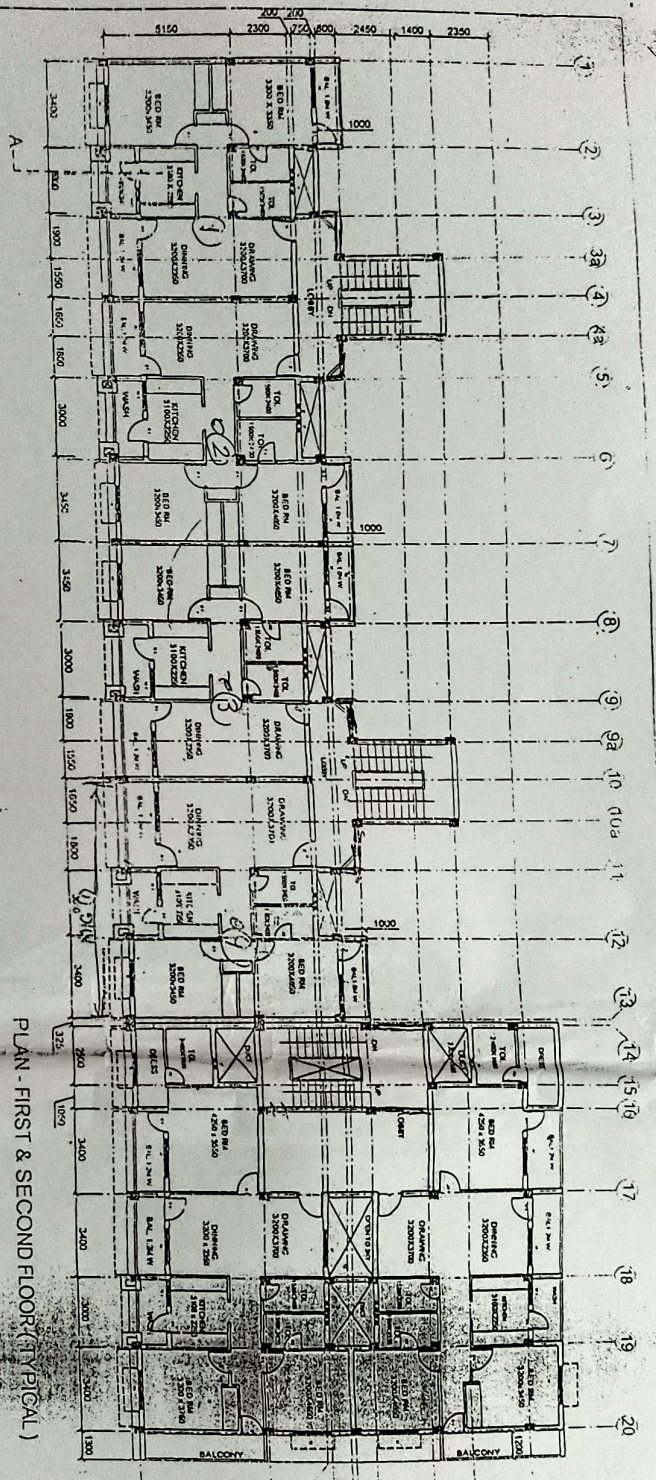


16.20 x 18.15
9.61
1-20K 155



DOOR / WINDOW SCHEDULE

ID	TYPE	SIZE	SPECIFICATION
D1	D	1.0 x 2.1	WOOD FRAME WOODEN PAINTED SHUTTER
D2	D	0.9 x 2.1	WOOD FRAME COMMERCIAL TUVIS SHUTTER
D3	D2	0.75 x 2.1	WOOD FRAME COMMERCIAL FLUSH SHUTTER
W1	W	1.5 x 1.20	ALUMINIUM WINDOW WITH GLAZED SHUTTER
W2	W	1.2 x 0.90	ALUMINIUM SLIDING WINDOW
W3	W1	0.6 x 0.65	ALUMINIUM FRAME WITH GLASS LOUVERS
R1	R1	2.40 x 2.70	ROLLING SHUTTER AS/SPCA

Executive Engineer
Chhattisgarh Housing Board
Division Raigadh

3.51 of 4.5

PROPOSED COMMERCIAL/INDIA RESIDENTIAL BLOCK AT CHHATTISGARH HOUSING BOARD ON 17th HESTLAND AT CHAMKARG, RAIGADH (C.G.)

STATE BANK OF INDIA ASSOCIATES

CHATTISGARH HOUSING BOARD

DATE: 25-06-2023

DEALT BY: [Signature]

PH: 011-25553031, 25510827 FAX: 011-25553032