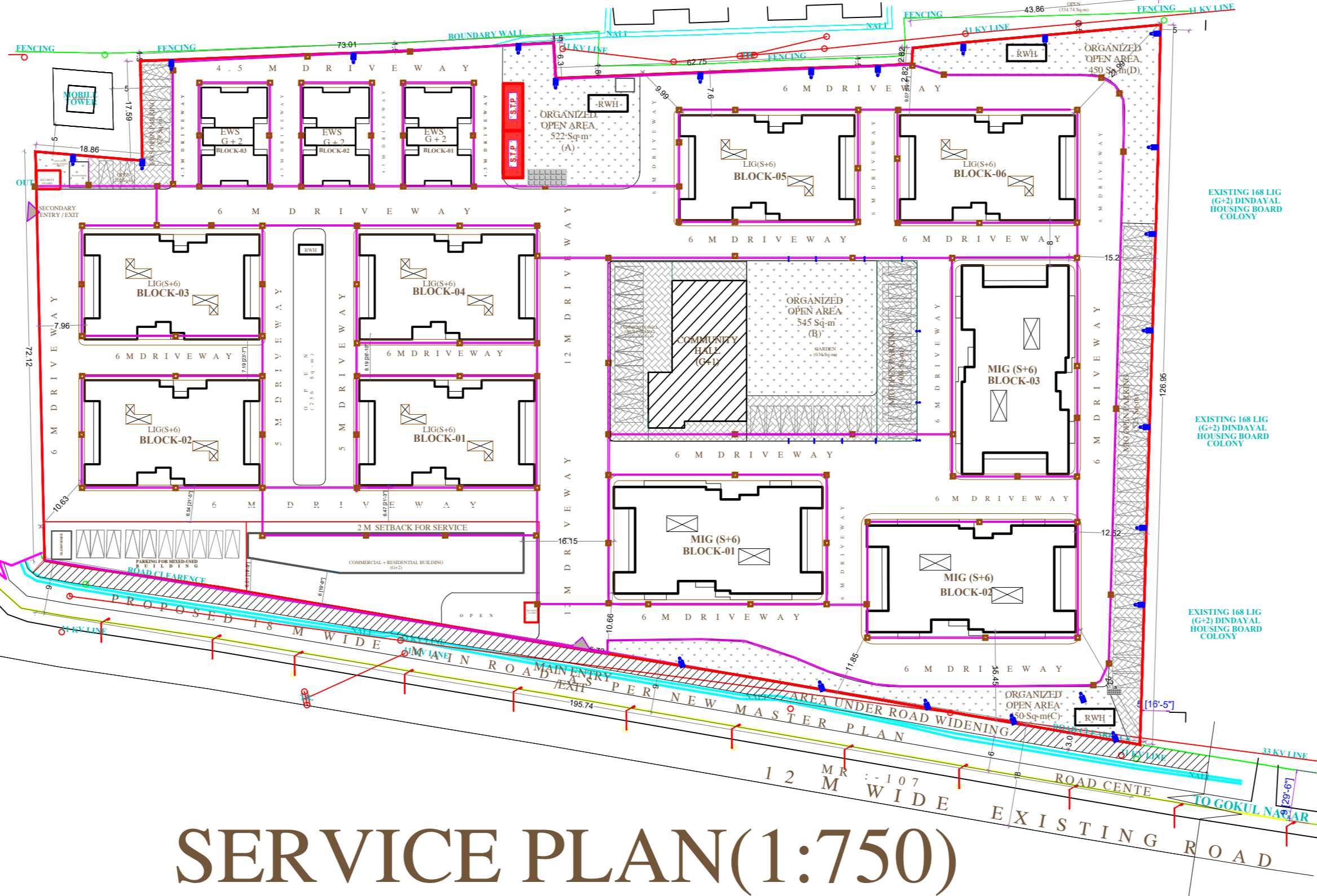
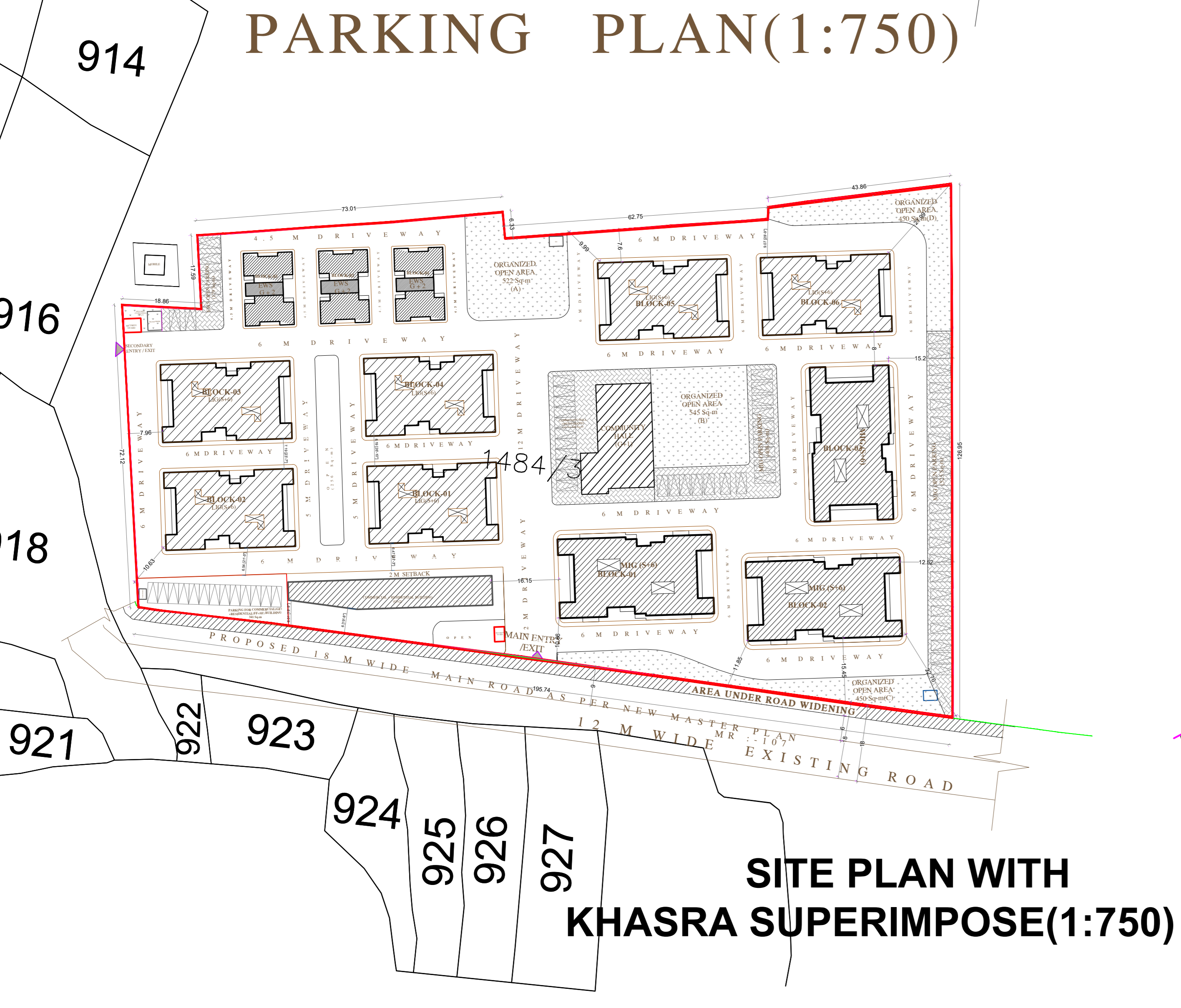
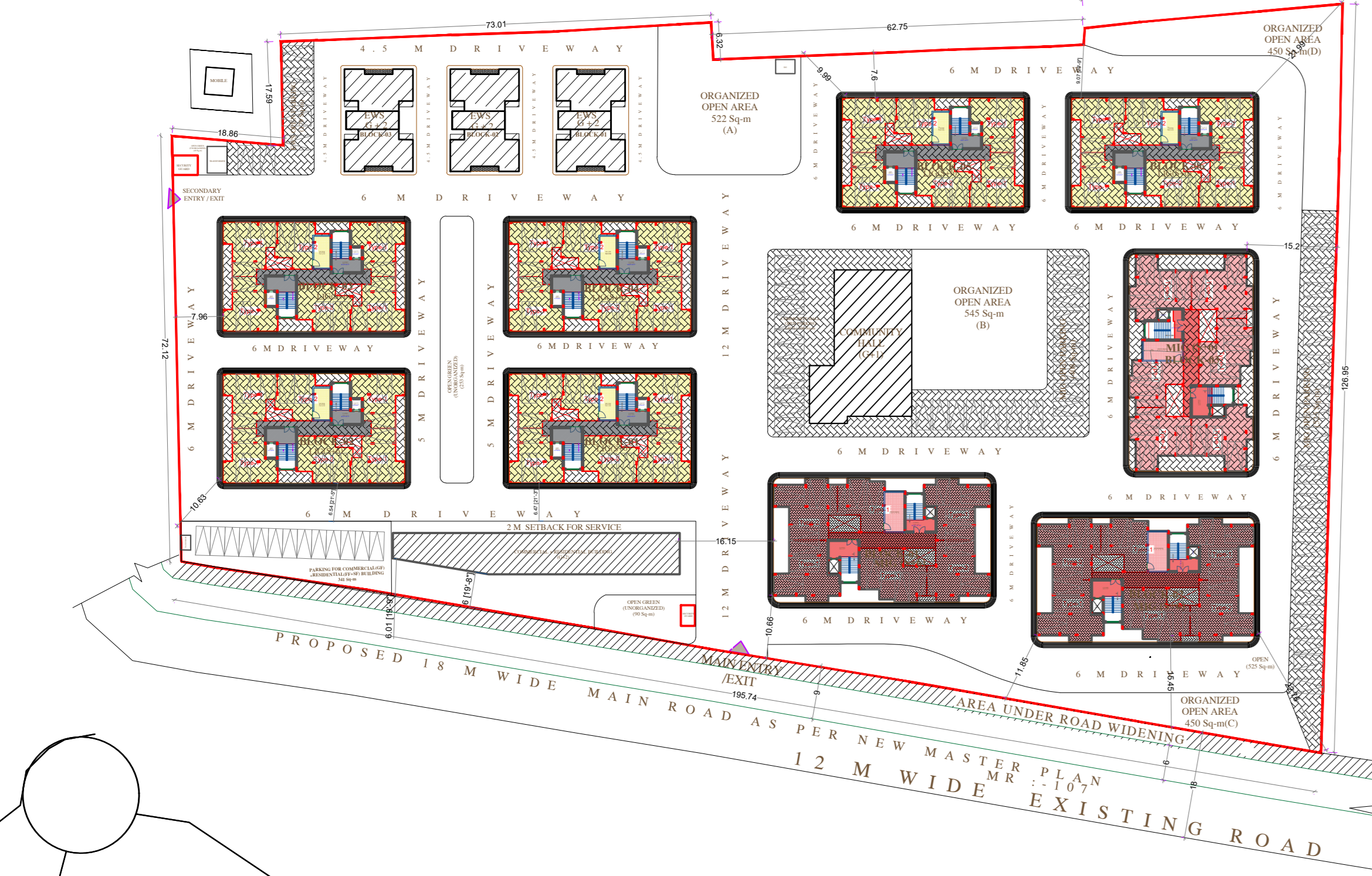
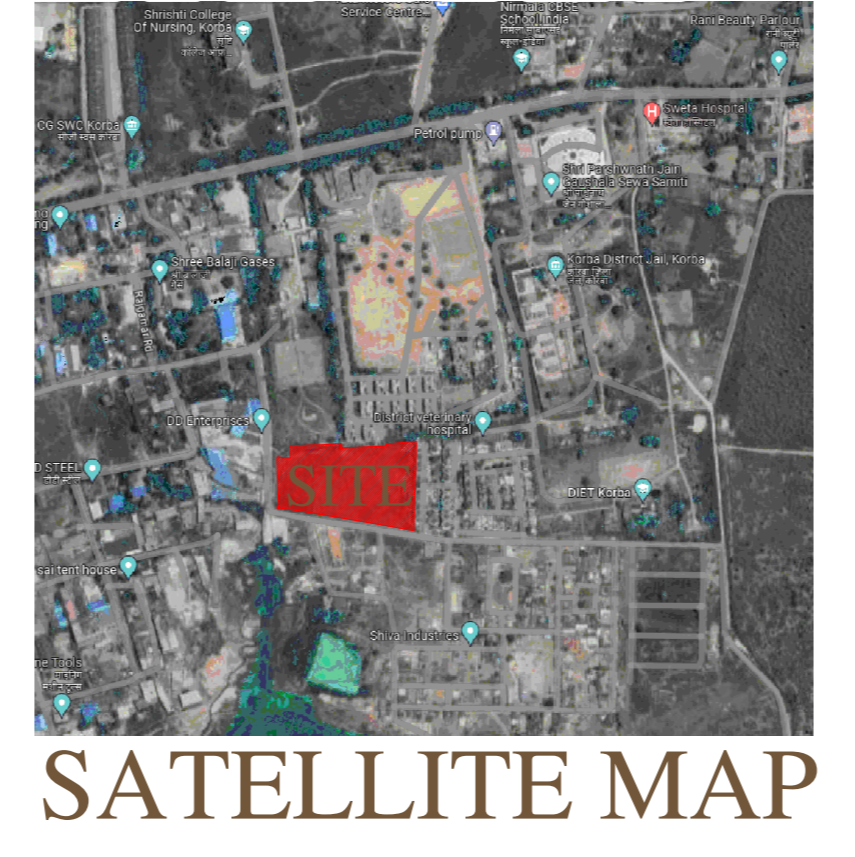
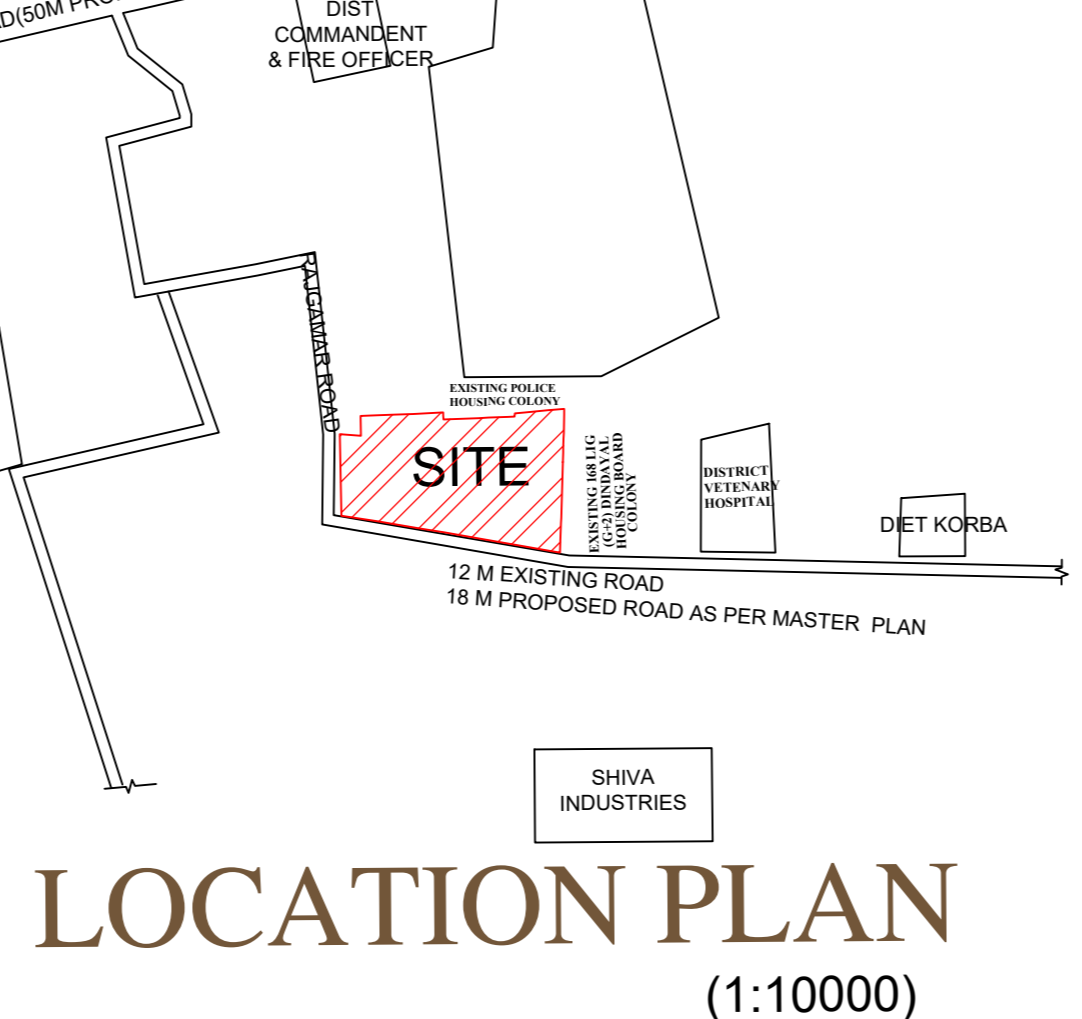
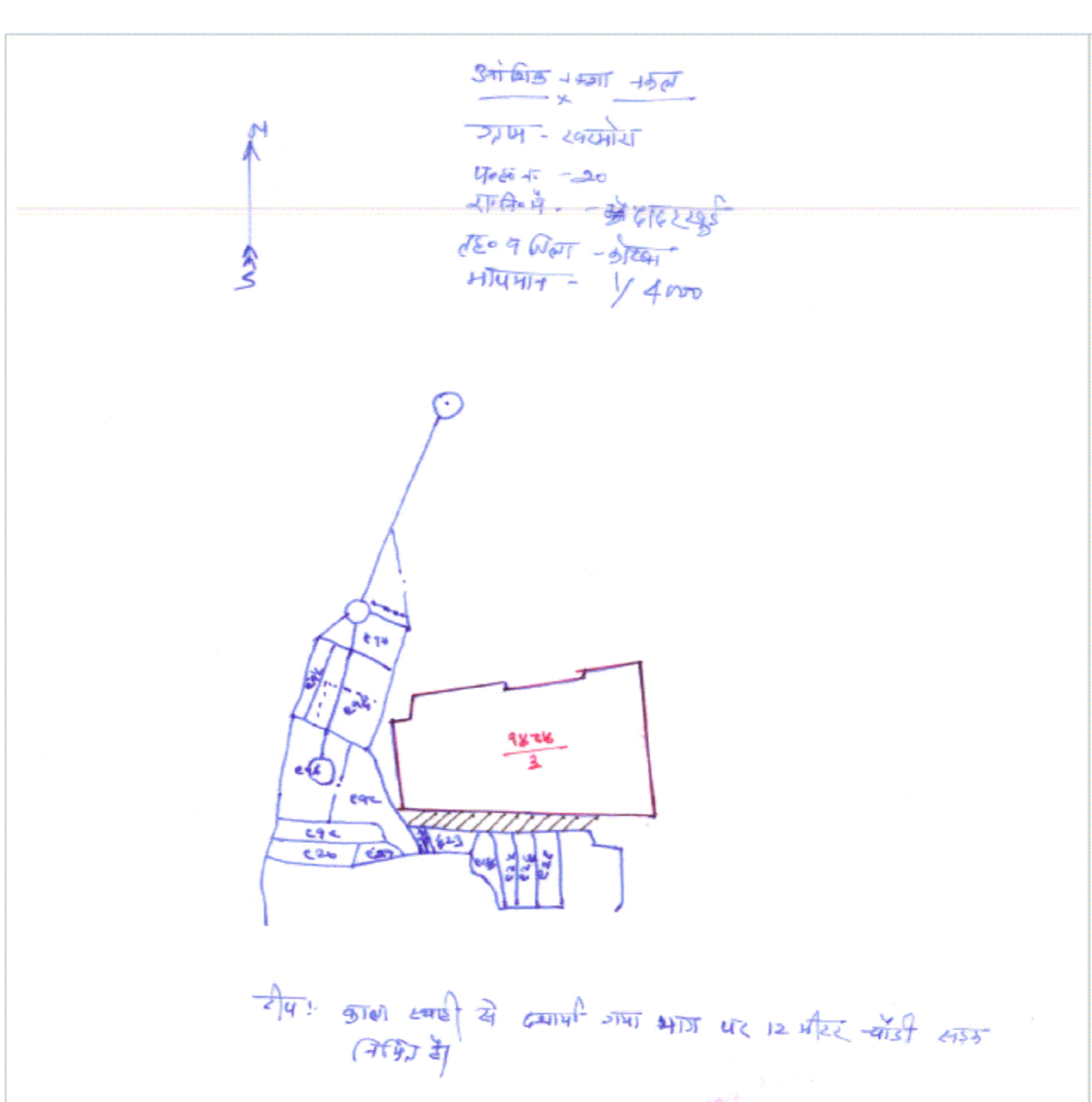
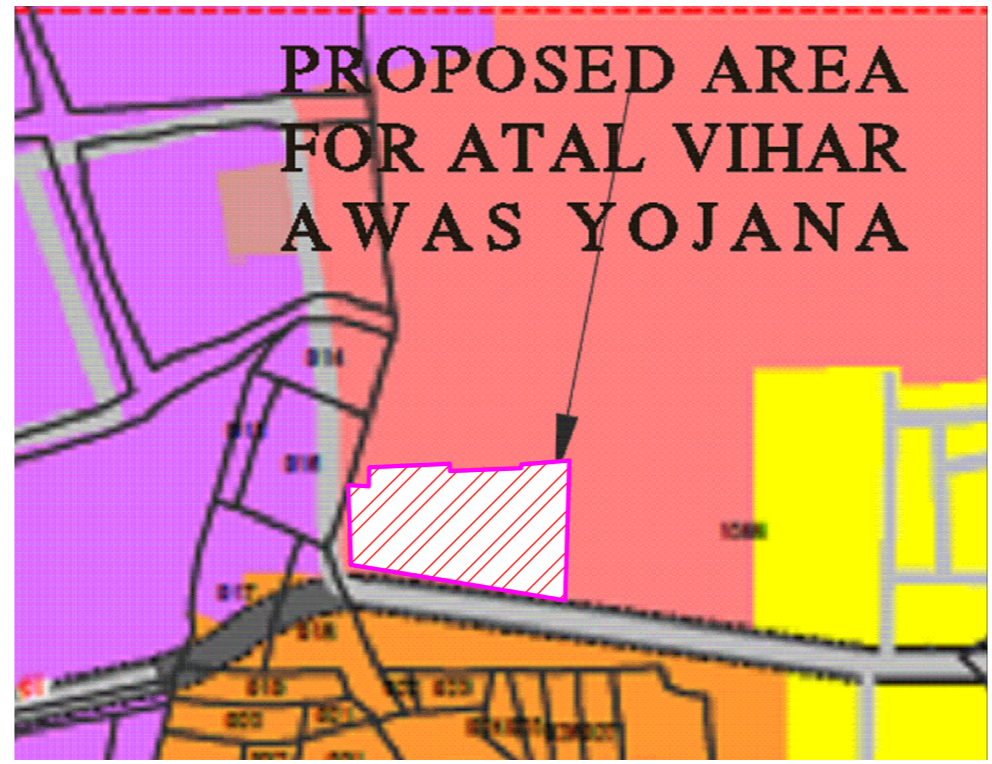


MIG AND LIG FLAT	
SIXTH FLOOR RESIDENCE	
FIFTH FLOOR RESIDENCE	
FOURTH FLOOR RESIDENCE	
THIRD FLOOR RESIDENCE	
SECOND FLOOR RESIDENCE	
FIRST FLOOR RESIDENCE	
STILT PARKING	
EWS FLAT	
SECOND FLOOR RESIDENCE	
FIRST FLOOR RESIDENCE	
GROUND FLOOR RESIDENCE	
COMMERCIAL CUM RESIDENTIAL LIG FLAT	
SECOND FLOOR RESIDENCE	
FIRST FLOOR RESIDENCE	
GROUND FLOOR SHOP	

TYPICAL CROSS SECTION



INDEX:

- RAIN WATER HARVESTING
- GARBAGE DISPOSAL
- ELECTRIC POLE
- TRANSFORMER
- DRAIN
- GREEN AREA
- CULVERT
- BORE WELL
- WATER SUPPLY
- SOLAR STREET LIGHT
- SEPTIC TANK

LEGEND

- SYMBOL
- DESCRIPTION
- 150MM LED STREET LIGHT MOUNTED ON 11.0M HEIGHT POLE
- 200MM STREET LIGHT MOUNTED ON 11.0M HEIGHT POLE
- 100MM POST TOP LIGHT FEATURE MOUNTED ON 4M HEIGHT POLE

MIG BLOCK (288 FLATS)

FLOOR	Area (Sq.M)	Total Area (Sq.M)
1	112	112
2	112	224
3	112	336
4	112	448
5	112	560
6	112	672
7	112	784
8	112	896
9	112	1008
10	112	1120
11	112	1232
12	112	1344
13	112	1456
14	112	1568
15	112	1680
16	112	1792
17	112	1904
18	112	2016
19	112	2128
20	112	2240
21	112	2352
22	112	2464
23	112	2576
24	112	2688
25	112	2800
26	112	2912
27	112	3024
28	112	3136
29	112	3248
30	112	3360
31	112	3472
32	112	3584
33	112	3696
34	112	3808
35	112	3920
36	112	4032
37	112	4144
38	112	4256
39	112	4368
40	112	4480
41	112	4592
42	112	4704
43	112	4816
44	112	4928
45	112	5040
46	112	5152
47	112	5264
48	112	5376
49	112	5488
50	112	5600
51	112	5712
52	112	5824
53	112	5936
54	112	6048
55	112	6160
56	112	6272
57	112	6384
58	112	6496
59	112	6608
60	112	6720
61	112	6832
62	112	6944
63	112	7056
64	112	7168
65	112	7280
66	112	7392
67	112	7504
68	112	7616
69	112	7728
70	112	7840
71	112	7952
72	112	8064
73	112	8176
74	112	8288
75	112	8400
76	112	8512
77	112	8624
78	112	8736
79	112	8848
80	112	8960
81	112	9072
82	112	9184
83	112	9296
84	112	9408
85	112	9520
86	112	9632
87	112	9744
88	112	9856
89	112	9968
90	112	10080
91	112	10192
92	112	10304
93	112	10416
94	112	10528
95	112	10640
96	112	10752
97	112	10864
98	112	10976
99	112	11088
100	112	11200

LIG BLOCK (288 FLATS)

FLOOR	Area (Sq.M)	Total Area (Sq.M)
1	112	112
2	112	224
3	112	336
4	112	448
5	112	560
6	112	672
7	112	784
8	112	896
9	112	1008
10	112	1120
11	112	1232
12	112	1344
13	112	1456
14	112	1568
15	112	1680
16	112	1792
17	112	1904
18	112	2016
19	112	2128
20	112	2240
21	112	2352
22	112	2464
23	112	2576
24	112	2688
25	112	2800
26	112	2912
27	112	3024
28	112	3136
29	112	3248
30	112	3360
31	112	3472
32	112	3584
33	112	3696
34	112	3808
35	112	3920
36	112	4032
37	112	4144
38	112	4256
39	112	4368
40	112	4480
41	112	4592
42	112	4704
43	112	4816
44	112	4928
45	112	5040
46	112	5152
47	112	5264
48	112	5376
49	112	5488
50	112	5600
51	112	5712
52	112	5824
53	112	5936
54	112	6048
55	112	6160
56	112	6272
57	112	6384
58	112	6496
59	112	6608
60	112	6720
61	112	6832
62	112	6944
63	112	7056
64	112	7168
65	112	7280
66	112	7392
67	112	7504
68	112	7616
69	112	7728
70	112	7840
71	112	7952
72	112	8064
73	112	8176
74	112	8288
75	112	8400
76	112	8512
77	112	8624
78	112	8736
79	112	8848
80	112	8960
81	112	9072
82	112	9184
83	112	9296
84	112	9408
85	112	9520
86	112	9632
87	112	9744
88	112	9856
89	112	9968
90	112	10080
91	112	10192
92	112	10304
93	112	10416
94	112	10528
95	112	10640
96	112	10752
97	112	10864
98	112	10976
99	112	11088
100	112	11200

ORGANIZED OPEN AREA

Block	Area (Sq.M)
Block-01	420
Block-02	420
Block-03	420
Block-04	420
Block-05	420
Block-06	420
Block-07	420
Block-08	420
Block-09	420
Block-10	420
Block-11	420
Block-12	420
Block-13	420
Block-14	420
Block-15	420
Block-16	420
Block-17	420
Block-18	420
Block-19	420
Block-20	420
Block-21	420
Block-22	420
Block-23	420
Block-24	420
Block-25	420
Block-26	420
Block-27	420
Block-28	420
Block-29	420
Block-30	420
Block-31	420
Block-32	420
Block-33	420
Block-34	420
Block-35	420
Block-36	420
Block-37	420
Block-38	420
Block-39	420
Block-40	420
Block-41	420
Block-42	420
Block-43	420
Block-44	420
Block-45	420
Block-46	420
Block-47	420
Block-48	420
Block-49	420
Block-50	420
Block-51	420
Block-52	420
Block-53	420
Block-54	420
Block-55	420
Block-56	420
Block-57	420
Block-58	420
Block-59	420
Block-60	420
Block-61	420
Block-62	420
Block-63	420
Block-64	420
Block-65	420
Block-66	420
Block-67	420
Block-68	420
Block-69	420
Block-70	420
Block-71	420
Block-72	420
Block-73	420
Block-74	420
Block-75	420
Block-76	420
Block-77	420
Block-78	420
Block-79	420
Block-80	420
Block-81	420
Block-82	420
Block-83	420
Block-84	420
Block-85	420
Block-86	420
Block-87	420
Block-88	420
Block-89	420
Block-90	420
Block-91	420
Block-92	420
Block-93	420
Block-94	420
Block-95	420
Block-96	420
Block-97	420
Block-98	420
Block-99	420
Block-100	420

COMMUNITY HALL

FLOOR	Area (Sq.M)
GROUND FLOOR	750
FIRST FLOOR	750
TOTAL BUILT UP AREA	1500

SECURITY CABIN

FLOOR	Area (Sq.M)
GROUND FLOOR	150
FIRST FLOOR	150
TOTAL BUILT UP AREA	300

MIG

Block	Type	No. of Flats per Floor	Built-Up Area	Carpet Area
Block-01	Type-01	20	77.95 SQM	63.95 SQM
Block-02	Type-02	20	77.95 SQM	63.95 SQM
Block-03	Type-02	20	77.95 SQM	63.95 SQM
Block-04	Type-02	20	77.95 SQM	63.95 SQM
Block-05	Type-02	20	77.95 SQM	63.95 SQM
Block-06	Type-02	20	77.95 SQM	63.95 SQM
Block-07	Type-02	20	77.95 SQM	63.95 SQM
Block-08	Type-02	20	77.95 SQM	63.95 SQM
Block-09	Type-02	20	77.95 SQM	63.95 SQM
Block-10	Type-02	20	77.95 SQM	63.95 SQM
Block-11	Type-02	20	77.95 SQM	63.95 SQM
Block-12	Type-02	20	77.95 SQM	63.95 SQM
Block-13	Type-02	20	77.95 SQM	63.95 SQM
Block-14	Type-02	20	77.95 SQM	63.95 SQM
Block-15	Type-02	20	77.95 SQM	63.95 SQM
Block-16	Type-02	20	77.95 SQM	63.95 SQM
Block-17	Type-02	20	77.95 SQM	63.95 SQM
Block-18	Type-02	20	77.95 SQM	63.95 SQM
Block-19	Type-02	20	77.95 SQM	63.95 SQM
Block-20	Type-02	20	77.95 SQM	63.95 SQM
Block-21	Type-02	20	77.95 SQM	63.95 SQM
Block-22	Type-02	20	77.95 SQM	63.95 SQM
Block-23	Type-02	20	77.95 SQM	63.95 SQM
Block-24	Type-02	20	77.95 SQM	63.95 SQM
Block-25	Type-02	20	77.95 SQM	63.95 SQM
Block-26	Type-02	20	77.95 SQM	63.95 SQM
Block-27	Type-02	20	77.95 SQM	63.95 SQM
Block-28	Type-02	20	77.95 SQM	63.95 SQM
Block-29	Type-02	20	77.95 SQM	63.95 SQM
Block-30	Type-02	20	77.95 SQM	63.95 SQM
Block-31	Type-02	20	77.95 SQM	63.95 SQM
Block-32	Type-02	20	77.95 SQM	63.95 SQM
Block-33	Type-02	20	77.95 SQM	63.95 SQM
Block-34	Type-02	20	77.95 SQM	63.95 SQM
Block-35	Type-02	20	77.95 SQM	63.95 SQM
Block-36	Type-02	20	77.95 SQM	63.95 SQM
Block-37	Type-02	20	77.95 SQM	63.95 SQM
Block-38	Type-02	20	77.95 SQM	63.95 SQM
Block-39	Type-02	20	77.95 SQM	63.95 SQM
Block-40	Type-02	20	77.95 SQM	63.95 SQM
Block-41	Type-02	20	77.95 SQM	63.95 SQM
Block-42	Type-02	20	77.95 SQM	63.95 SQM
Block-43	Type-02	20	77.95 SQM	63.95 SQM
Block-44	Type-02	20	77.95 SQM	63.95 SQM
Block-45	Type-02	20	77.95 SQM	63.95 SQM